

Celebrating Openness and Transparency in the Workplace



Project
Imagine Graphics Remodel
990 Garfield, Eugene
(Formerly the Miller Paint Building)

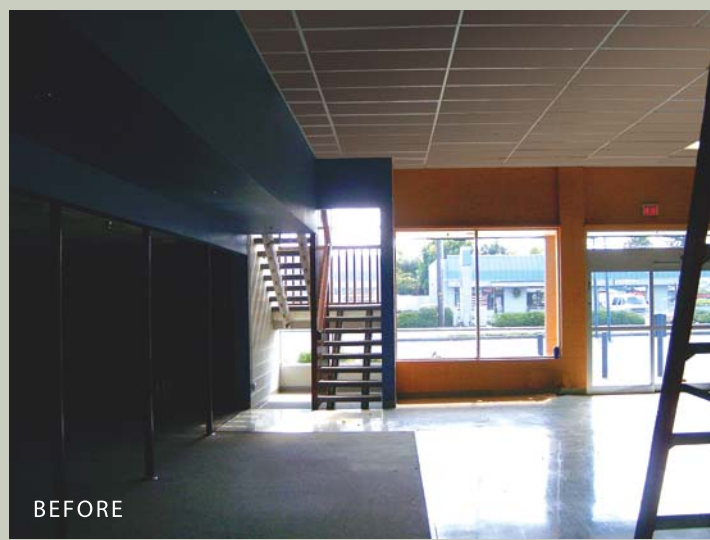
Architect
Nir Pearlson Architect, Inc.

Landscape Architect
Kate McGee Landscape Architect

Structural Engineer
Hohbach-Lewin, Inc.

Marketing, Displays, Finishes
Funk/Levis & Associates

Contractor
Schar Construction



CLIENT'S VISION A new home for Imagine Graphics: a building that reflects and supports the company's commitment to vibrant creativity and open communication

ARCHITECT'S CHARGE To transform a non-descript warehouse into an inspiring work environment: an attractive domain of creativity and commerce

DESIGN CONCEPT To reveal and enhance the original modernist structure of the 1960's building through a series of de-construction moves:

- Removal of a section of the low ceiling so the volume reaches upwards to the tall roof
- Replacement of the 2nd floor corridor wall with a transparent railing, spatially joining the two floors via the new double-height volume
- Removal and replacement of a massive 1980's canopy with a slender structural steel colonnade
- Opening of new clerestories and windows to fill the interiors with abundant daylight



MINIMALIST DESIGN STRATEGY

- Fabricate canopies, stairs, railings and partitions with off-the-shelf components: structural steel, dimensional lumber, particle board, and stainless-steel cable
- Expose and treat architectural materials such as wood, steel, concrete block, and aluminum to reflect their distinct nature in form, texture, and color
- Landscape planting areas with a select inventory of elegant plants set amongst rough stones in a range of sizes

SUSTAINABILITY MEASURES

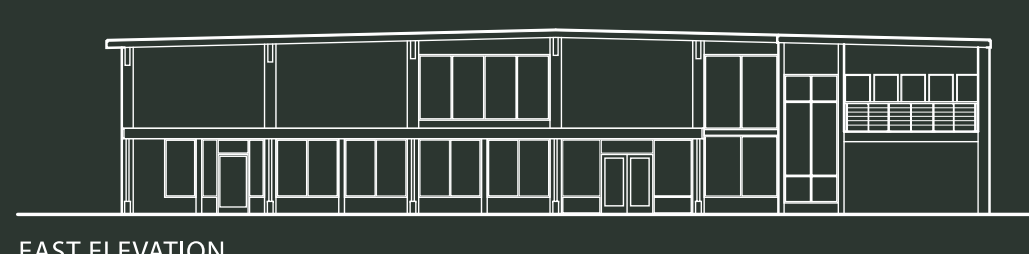
- Re-claimed boards, sustainably-harvested lumber and straw-board sheets compose the casework, trim, trellises, railings and paneling
- Natural linoleum and replaceable carpet tiles cover floor surfaces
- Low-VOC paints used throughout
- Increased insulation and double-glazed windows substantially reduce heating and cooling needs
- Added windows minimize the need for artificial lighting
- High-efficiency HVAC and electrical systems replace aging equipment

IMAGINE GRAPHIC'S PHILOSOPHY OF OPENNESS AND TRANSPARENCY EXPRESSED IN THE WORK PLACE

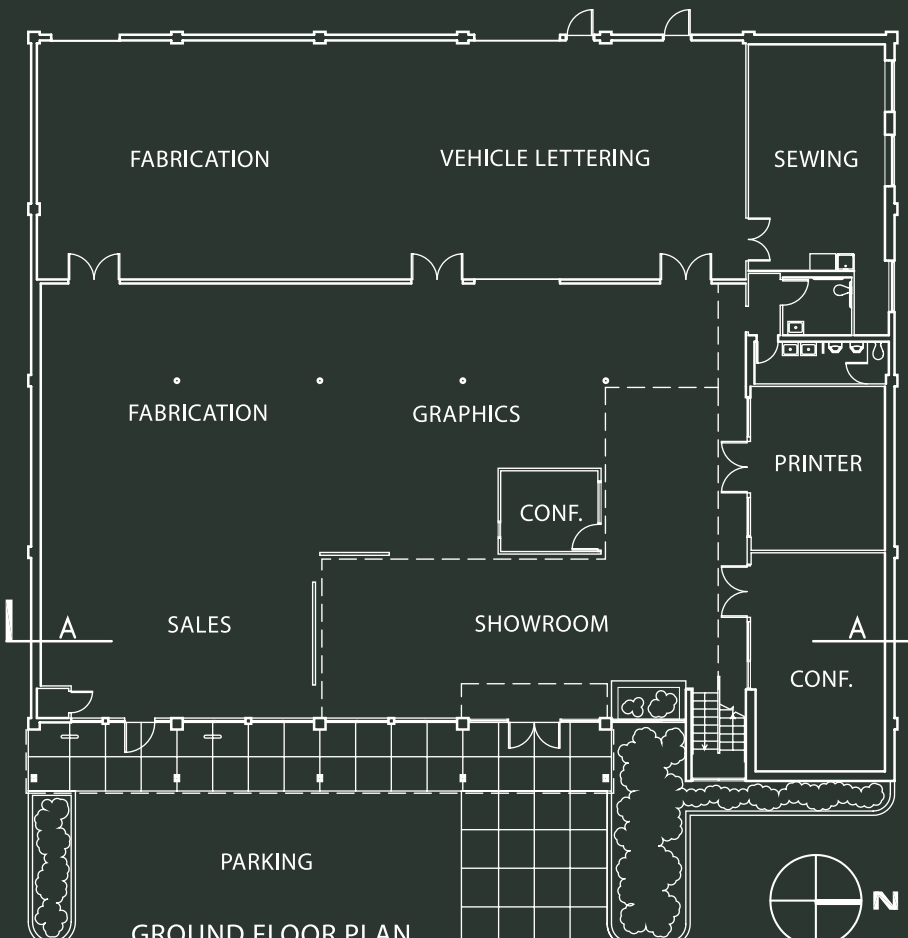
- All departments - management, sales, graphic design and production - are directly linked, supporting interactions and a creative flow of ideas
- The exterior and interior realms communicate, reflect, and inform each other
- The porous boundaries between the showroom and the production area offer clients and employees the opportunity to witness, and participate, in the transformation of imagination into graphics



CROSS-SECTION A-A



EAST ELEVATION



GROUND FLOOR PLAN

